



# Lower Merion School District Administrative Proposal: Transitioning to the New Middle School and Reimagined K-4 and 5-8 Student Experience

Lower Merion School District will be opening the doors to its new middle school in Fall 2022. Over the past several years, careful consideration has been given to four distinct plans for transitioning students to the new school, while also reimagining the K-4 and 5-8 student experience in all elementary and middle schools.

The Administration is now recommending that the new middle school open in Fall 2022 at full capacity with grades 5-8 from the Gladwyne Elementary and Penn Wynne Elementary attendance areas. At the same time, all District elementary and middle schools will transition to the reimagined K-4 and 5-8 student experience.

**Read on to learn more.**

## District Point-of-View



### 2020-2021

**The District has:**

Offered three models for programming during pandemic: LMSD@Home, LMVA, and Phased Return to School in which schools transitioned among all-virtual, hybrid, and full return models.

### 2021-2022

**The District will:**

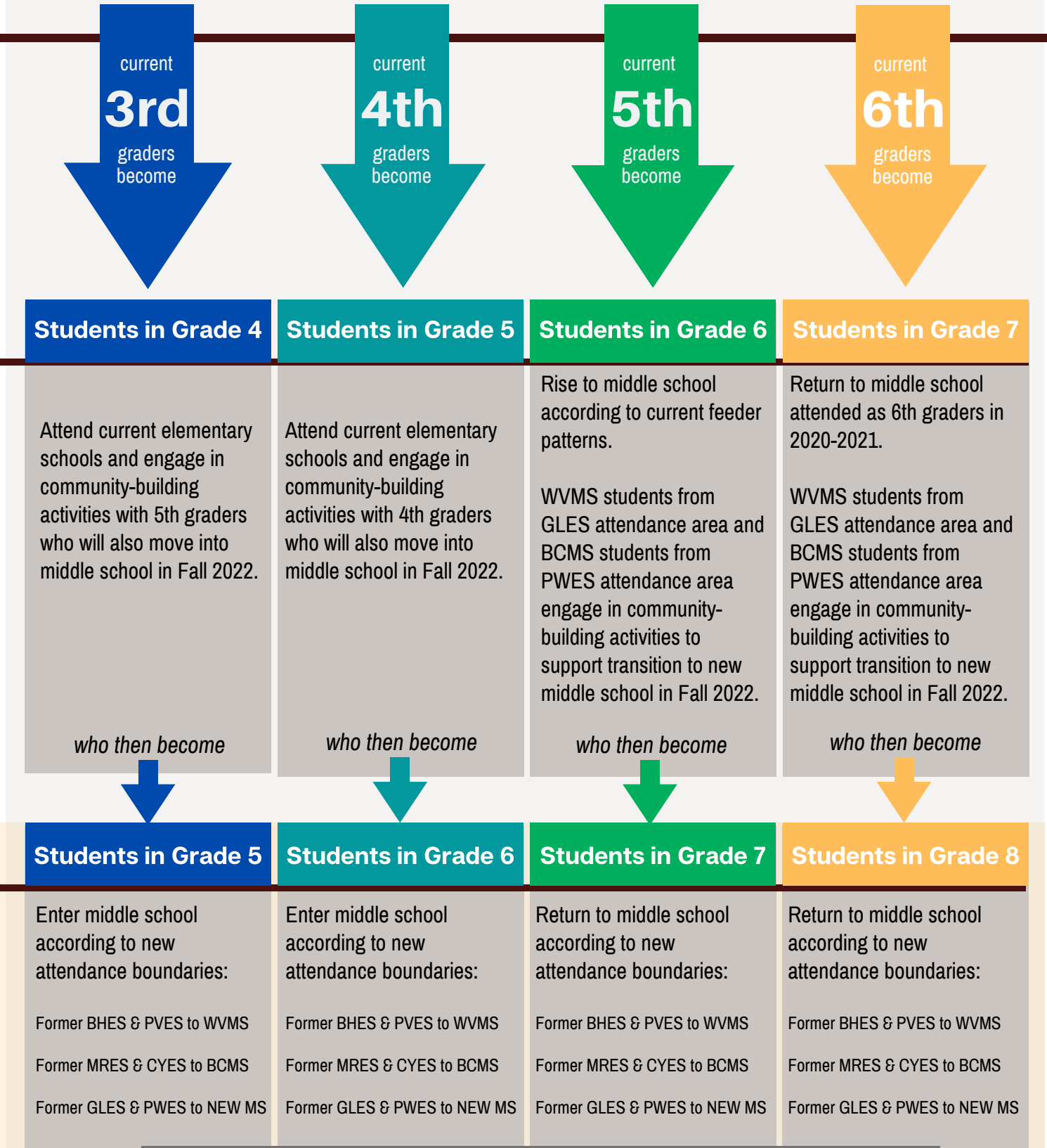
- Engage students and families in community-building and develop comradery among future cohorts
- Finalize K-4 and 5-8 educational programming models
- Appoint new middle school principal
- Plan reconfiguration of staff for K-4 and 5-8 schools; hire new staff as needed.
- Finalize construction and interior design elements of new school

### 2022-2023

**The District will:**

- Open new middle school at full capacity
- Transition to reimagined K-4 and 5-8 curricula in all schools
- Alleviate crowded conditions at all existing elementary and middle schools

## Student Point-of-View



Athletic program locations to be determined. Options include:  
1) onsite and at temporary rental fields or 2) combined teams with BCMS/WVMS.

## Why this plan?

**This plan benefits the entire LMSD community in many ways, including:**

- Immediate alleviation of crowded conditions at all six elementary schools and the two existing middle schools\*
- Equitable implementation of the reimagined K-4 and 5-8 curricula for all students
- Immediate opportunity to build school community and culture among all grades (5th through 8th) in the new middle school
- Implementation of consistent, districtwide community-building activities in 2021-2022 for 4th & 5th grade cohorts in all schools
- Wider participation opportunities for extracurricular activities
- Consistency in staffing and programming across all elementary and middle schools\*
- Consistency for families with more than one middle school student; no families split between two middle schools
- Transportation efficiency\*

\*denotes a cost advantage over other transition scenarios considered

### Share your questions and input!

The Administration invites members of the community and staff to share the questions they would like to have answered, as well as their input for Board consideration, using the **Transition Plan Feedback Form** at [www.lmsd.org/feedback](http://www.lmsd.org/feedback) or by emailing [communitycomments@lmsd.org](mailto:communitycomments@lmsd.org). The Feedback Form will open May 11 and close June 1.

### Upcoming presentations:

**Curriculum Committee of the Board:** Wednesday, May 5, 2021, 8:30 AM  
**Education Meeting of the Board:** Monday, May 10, 2021, 8:00 PM  
**Interscholar Council (ISC) State of the District Meeting:** Tuesday, May 11, 2021, 9:30 AM  
**Expected Board Vote: Monday, June 14, 2021, 8:00 PM**